



# ArmorONE® Panels

For the highest Strength-to-Weight ratio.

Moisture Impervious and Made in the USA with Origami Composites.



ARMORY TECHNOLOGIES

■ Origami Composites™

## The Technology to Transform™

---

Developed through R&D contracts with NASA and the National Science Foundation, Origami Composites are a new class of materials that rely on geometry and mechanical engineering to improve material performance.

Origami Composites are distinct in their ability to incorporate a spectrum of performance characteristics to address some of manufacturing's most pressing material challenges. Lighter can be stronger. Stronger can be thinner. Thinner can be stiffer.

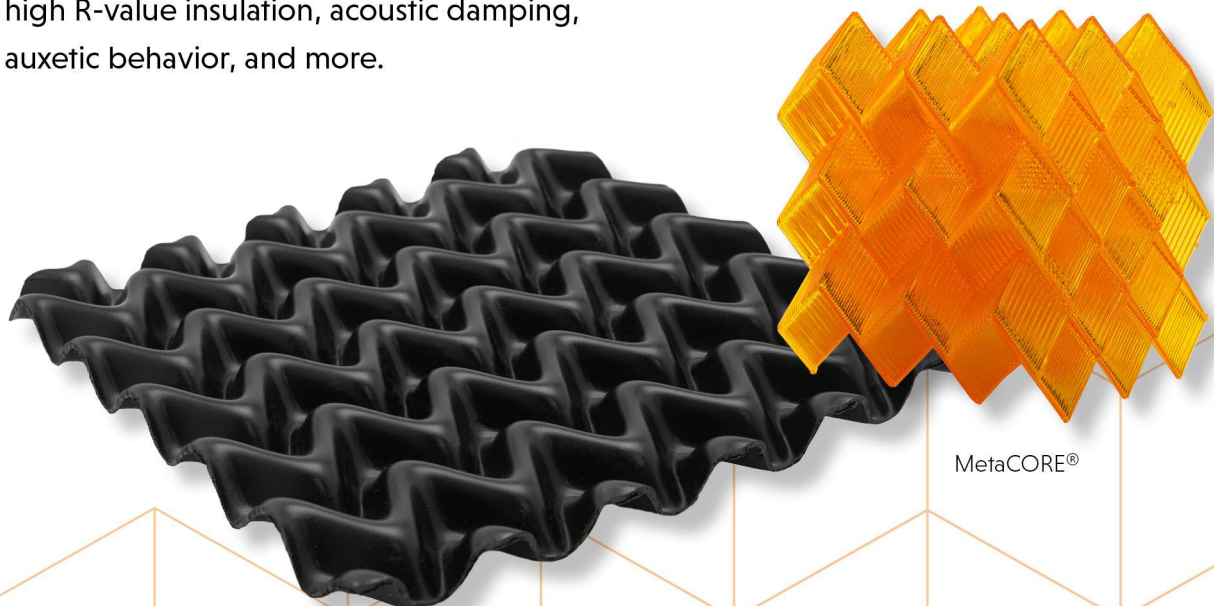
Inspired by the science of folding paper to impart structure, Origami Composites are engineered with geometric structure to achieve advanced functionality such as elasticity, impact and energy absorption, vibration control, thermal management, high R-value insulation, acoustic damping, auxetic behavior, and more.

Origami Composites are made substantially lighter and stronger by imparting structure without increasing density in the base material. Their geometric configuration distributes weight and force, enabling common materials to conform, convey, and withstand uncommon stress. In the context of material science, they are a faster, easier, more economical alternative to molecular or chemical engineering.

ArmorONE® Panels are fabricated with Origami Composites at their core. Engineered to meet the unique demands of road transportation, these performance panels are not just lighter, but stronger, and smarter.

Contact us to request a sample:

**[ArmorONE@armorytechnologies.com](mailto:ArmorONE@armorytechnologies.com)**



MetaCORE®

Optimized for Transportation

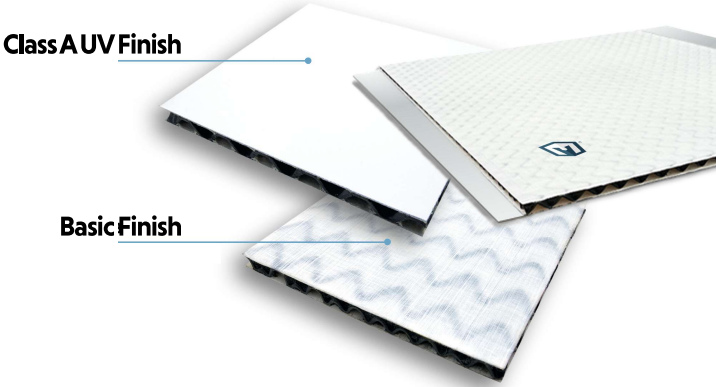
# ArmorONE®

Durable, moisture-impervious, economical and sustainable, ArmorONE composite panels deliver immediate ROI and a unique competitive advantage.

ArmorONE is the only panel made from patented Origami Composites to deliver the greatest available stiffness- and strength-to-weight ratios. It's a breakthrough in strength and lightweighting.

The combination of new technology, proprietary material mix, core geometry, and panel thickness imparts insulation properties to provide increased R-value and sound attenuation, along with structural rigidity.

ArmorONE panel products are UV resistant per automotive standards and resistant to shear, puncture, and 3-point bending forces.

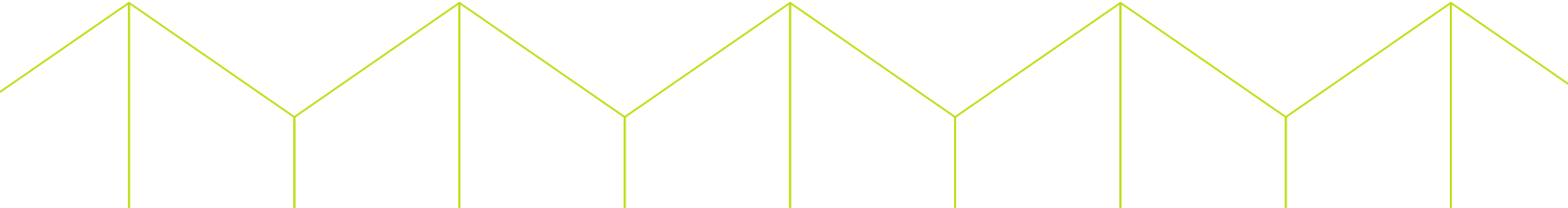
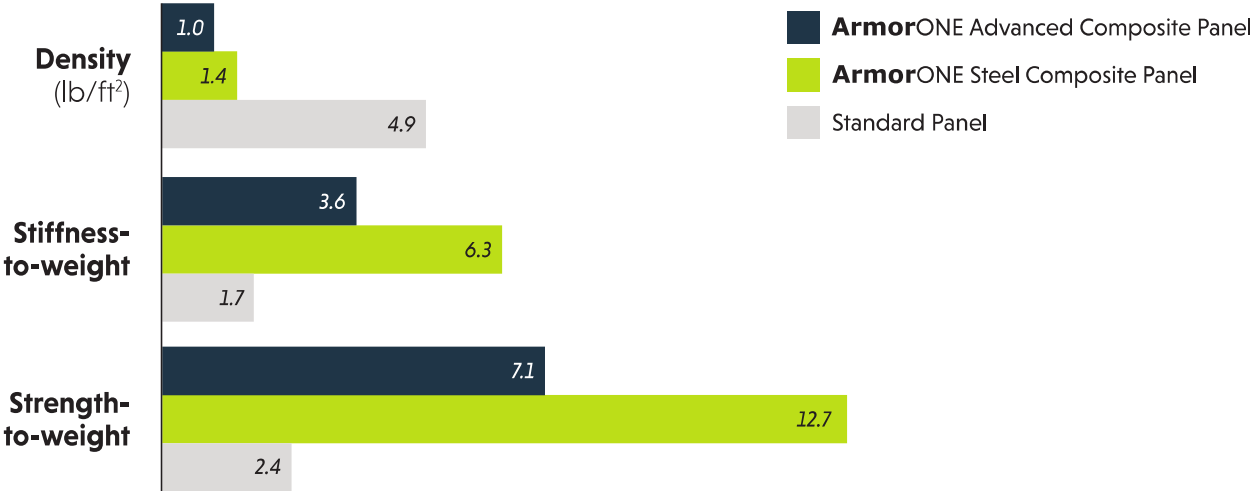


## ArmorONE Product Line

- **Advanced Composite** ultralight panel\*
- **Steel Composite** lightweight panel\*
- **MetaCORE** with geometry for lightweighting and structural performance.
- Roll-up Door
- Swing Door

\* shiplap or parallel option

## ArmorONE vs Traditional Panels



# Advanced Composite Technology

---

## What is Advanced Composite?

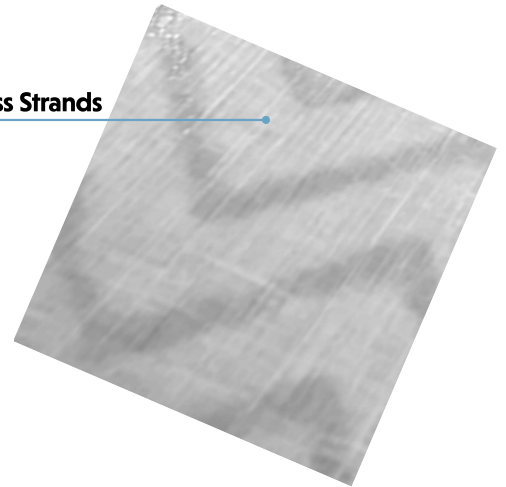
Advanced Composite is comprised of at least 60% continuous fiber enmeshed in thermoplastic to provide maximum strength.

## How is ArmorONE Advanced Composite different from traditional Fiberglass?

ArmorONE's Advanced Composite is an engineered material designed for applications such as aeronautics, where high strength-to-weight ratio is crucial. It is composed of 50% recycled, 100% recyclable thermoplastic interwoven with continuous glass filaments (i.e. fiberoptic strands). Advanced Composite is distinctly different from "fiberglass" which is composed of crushed glass mixed

with thermosets. Because fiberglass forms a chemical bond when cured, it is permanently hardened and brittle, non-recyclable, impossible to re-mold, and requires sanding to repair. ArmorONE Advanced Composite is repairable by softening at high temperature, avoiding dangerous air-borne particles from sanding.

Continuous Glass Strands



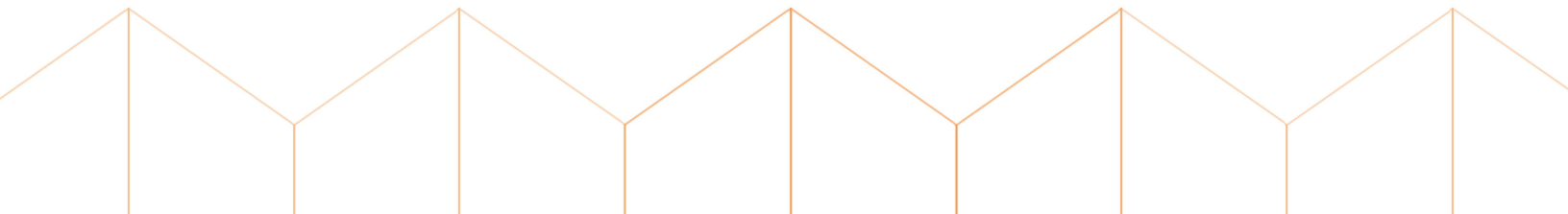
## ArmorONE vs Traditional Panels

---

ArmorONE Panels are being tested by transportation OEMs in the truck, trailer, bus, and RV industries along with U.S. third-party ASTM laboratories to prove their performance properties:

- Corrosion and moisture impervious
- Exceptionally impact resistant
- The greatest available stiffness- and strength-to-weight ratios
- Half the weight of conventional panel materials
- Stronger than 'honeycomb'
- Lighter and faster to assemble than 'sheet and post' or plywood
- Made in the U.S.A. at a market competitive price

Email us today at [ArmorONE@armorytechnologies.com](mailto:ArmorONE@armorytechnologies.com) for samples that will give you a sense of the available strengths and weight savings our technology delivers.



Optimized for Transportation

# ArmorONE®

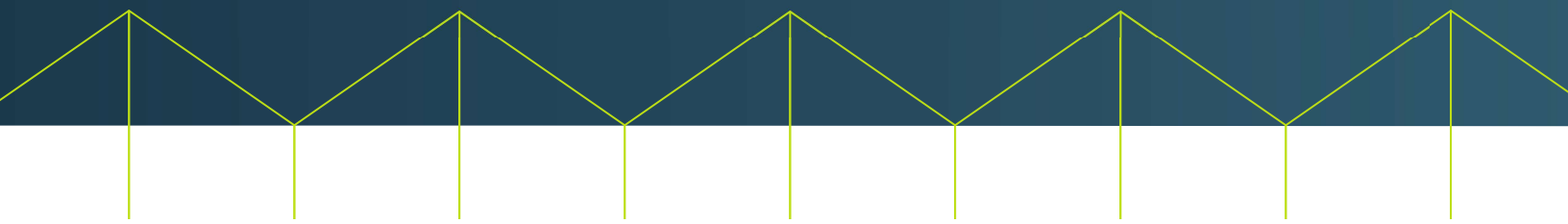
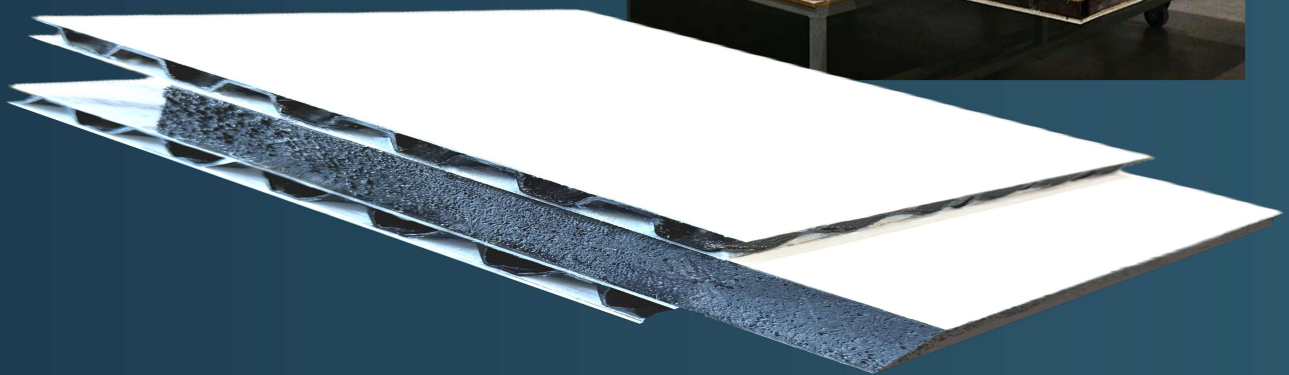
---

**Streamlining wall systems for improved cost and performance.**

Plywood walls are heavy, labor intensive, and prone to deterioration. ArmorONE composite panels combine structural support, moisture-proofing, and improved insulation (R-value) at a fraction of the weight.

**Structural. Insulating. Impervious.**

ArmorONE composite panels eliminate moisture, mold, and rot, replacing wood with equivalent strength and stiffness at a fraction of the weight.



# Optimized for Transportation

# ArmorONE®



Extreme durability  
at 1/2 the weight.

Made for truck bodies,  
towable trailers,  
& RV campers.

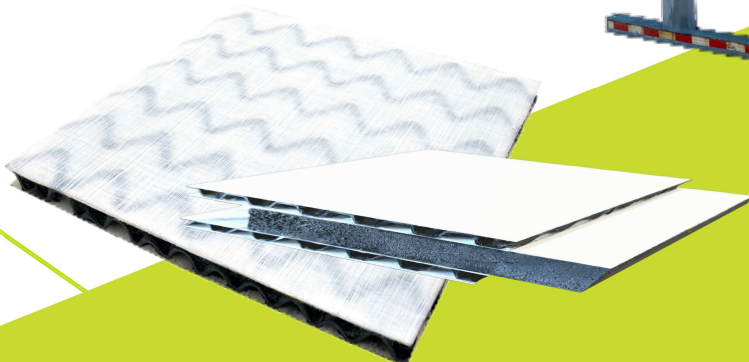


Available in all-composite or steel

## Roll-up Door



## Swing Doors



# Sustainable Solutions

---



## Recycled Materials

Origami Composite cores use up to 50% recycled materials. Our closed loop system ensures 100% of polymer is re-ground and re-used.



## For the Planet

Reduced environmental footprint by manufacturing in the U.S. using 100% domestic materials and no harmful foam-blowing agents.



## More Efficient

Lighter panels make lighter trailers for greater fuel efficiency and fewer emissions.



## Electric Vehicles

Lighter panels promote electrification by offsetting battery weight.

## USA Made

---

ArmorONE Panels are manufactured in the United States using only domestically-sourced materials—supporting American manufacturing and reducing risk and reliance on international supply chains.





Discover more at [armorytechnologies.com](https://armorytechnologies.com)

Or contact us at 1-866-778-6415



**ARMORY TECHNOLOGIES**

Information accurate at time of printing and subject to change without notice.

Copyright © 2026 Armory Technologies, Inc. All rights reserved.